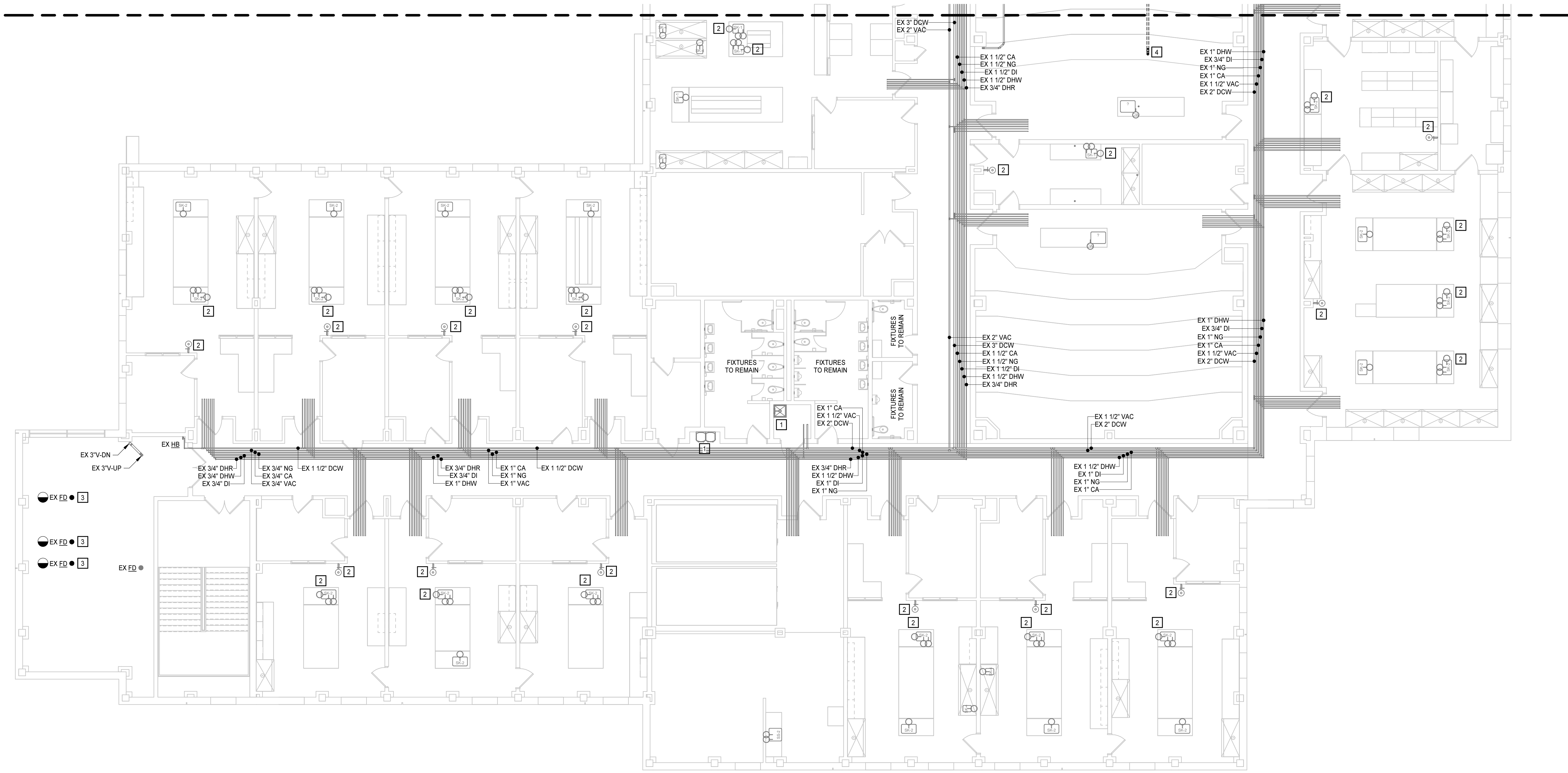
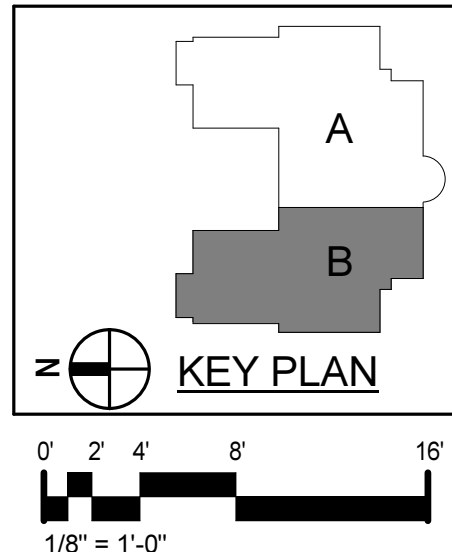
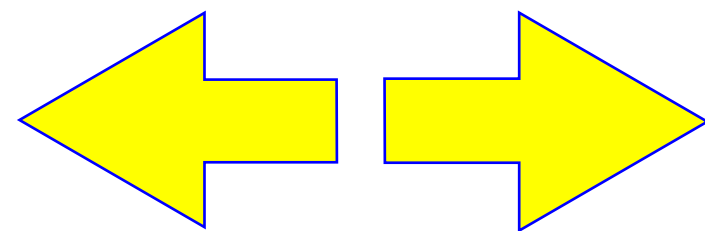


3/27/2019 12:08:38 PM



SECOND FLOOR PLAN - AREA B - DEMOLITION

1/8" = 1'-0"

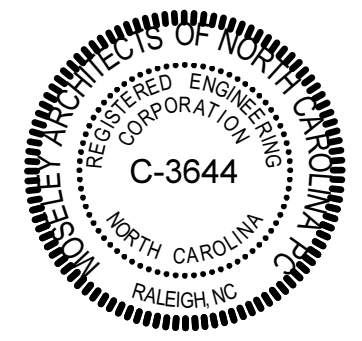


KEYNOTES

APPLIES TO DRAWINGS P1.2.B
REPRESENTED BY [n]

1. REMOVE EXISTING PLUMBING FIXTURE COMPLETE BACK TO WALL AND PREPARE EXISTING UTILITIES FOR NEW CONNECTION.
2. REMOVE EXISTING EMERGENCY FIXTURE COMPLETE AND PREPARE EXISTING UTILITIES FOR NEW CONNECTION.
3. REMOVED EXISTING FLOOR DRAIN COMPLETE BACK TO POINT INDICATED AND CAP EXISTING BRANCH. PATCH AND REPAIR FLOOR.
4. REMOVE EXISTING PIPING SERVING ATTIC COMPLETE BACK TO POINT INDICATED AND PREPARE FOR NEW CONNECTION. PATCH AND REPAIR FLOOR.

PROGRESS
PRINT, NOT FOR
CONSTRUCTION



Dobo Hall Renovation - Package A

SCO PROJECT NO. 18-19798-01A

UNC Wilmington

4978 CAHILL DR, WILMINGTON, NC 28403

PROJECT NO.	DATE
580999	MARCH 27, 2019
REVISIONS	
DATE	DESCRIPTION

SECOND FLOOR
PLAN - AREA B -
DEMOLITION

P1.2.B

MOSELEYARCHITECTS

911 N. WEST STREET, SUITE 205 RALEIGH, NORTH CAROLINA 27603
PHONE (919) 845-0091
MOSELEYARCHITECTS.COM